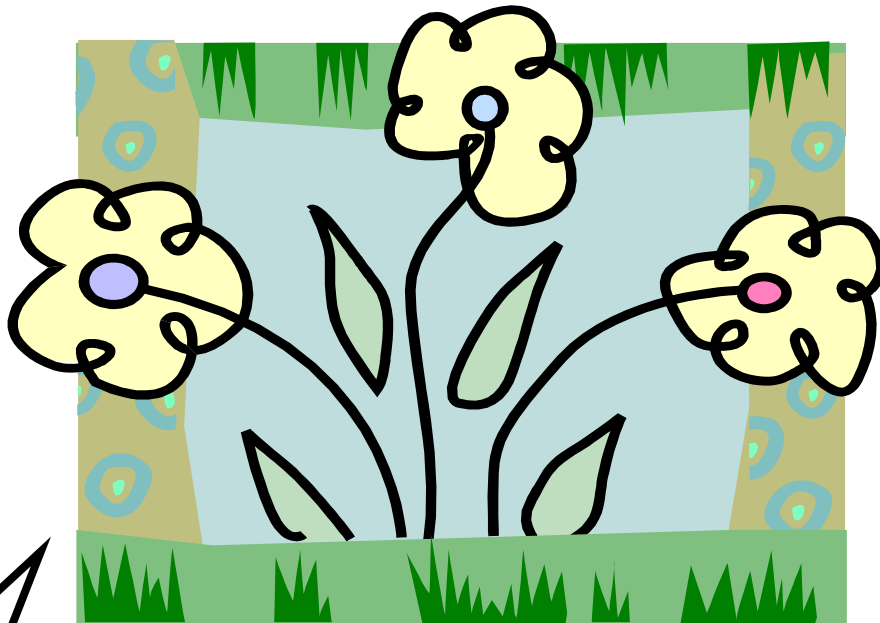


**Continuing Professional Education
(CPE)
Courses for Credit**

Summer 2011



**5 New
Courses!**

**Act 48
Opportunities**

Table of Contents

	<u>Page</u>
IU 13 Continuing Professional Education Policies	
■ Act 48 Requirements	2
■ Attendance	2
■ Weather Delay/Cancellation Information	2
■ Payment Information	3
■ Receipts	3
■ Refund Policy	3
■ Enrollment	3
■ Nondiscrimination Policy	3
 PPID Information	 4
 Course Descriptions by Category	
■ Teaching and Learning Professional Development	5-9
■ Instructional Technology	10
■ Student Social and Health Issues	11-13
 How to Register for IU 13 CPE Courses	 14
 On-Line Registration Contacts by School District	 15

IU 13 Continuing Professional Education Policies

Continuing Professional Education ("CPE") in Pennsylvania is a planned, competency-based program whereby professional educators may earn CPE credits to maintain active certification or simply improve skills and content knowledge. The Lancaster-Lebanon Intermediate Unit 13 and Design Team offer this CPE credit course program as a service to educators. All instructors have demonstrated expertise in their field and are currently teaching or working in the area they are presenting. Drue Feilmeier, Curriculum and Instruction Specialist, IU 13 Instructional Services, has administrative responsibility for all courses. Individuals should check local school district policy if they wish to use CPE credits for purposes other than those outlined by the Pennsylvania Department of Education (PDE). These courses are not part of a graduate degree; however, they may be used to obtain PA Level II certification or a Letter of Equivalency.

The courses listed are organized and sponsored by IU 13. However, any school district or school-related organization may submit programs to the Design Team. Upon approval by the local Design Team and PDE, courses may be offered for CPE credit.

ACT 48

Each CPE course credit is equal to 14 clock hours or 30 hours towards Act 48 requirements for educators to maintain their PA teaching certificate. Act 48 requires that educators complete at least 6 credits or 180 hours of continuing professional education or learning activities or any combination every five calendar years. Act 48 hours are different from "clock hours" in that clock hours include classroom instructional time only. Since courses are designed to include approximately one hour of outside-of-class work for every hour of in-class time, each clock hour is worth approximately two (2) Act 48 hours. Breaks for meals and homework time may not be included in the clock hours or Act 48 hours. The number of course credits is determined by the clock hours as follow:

14 Clock Hours	=	1 Credit	=	30 Act 48 hours
28 Clock Hours	=	2 Credits	=	60 Act 48 hours
42 Clock Hours	=	3 Credits	=	90 Act 48 hours

ATTENDANCE

We urge all participants to comply with PDE's policy of 100% attendance for credit. We will consider limited absences for emergencies only. Participants are responsible for making arrangements with the instructor(s) for any necessary make-up work to fulfill course requirements. Attendance after the first session may not be permitted if course fee is unpaid.

WEATHER DELAY/CANCELLATION INFORMATION

For information regarding weather delays/cancellations, visit our website www.iu13.org and click on Weather Delays and Cancellations; tune in to WGAL-8, ABC-27, CBS-21, and FOX 43; or dial IU 13's Conference Center hotline at 717-606-1600 and select option 5.

PAYMENT

The basic fee for these courses is \$175.00 per credit; however, the total fee may vary according to the materials and supplies required. ***Payment must be received one week before the first class meets.*** A separate check for each course is requested. Unless specified otherwise, make checks payable to: ***Lancaster-Lebanon IU 13.*** District authorized purchase orders will also be accepted. ***Please send payment to 1020 New Holland Avenue, Lancaster, PA 17601. Attention: Beth Parkins.***

RECEIPTS

Those who register by the deadline and successfully complete course requirements will receive a receipt in the mail. Pennsylvania certified teachers will also receive course certificates of completion.

REFUNDS

- Full refund when notified of cancellations at least one week prior to the start date.
- Partial refund (50%) if canceled less than at least one week prior to the start date.
- No refund for cancellations after course starts and for no-show.
- Please follow your school district's online policies and procedures.

ENROLLMENT

To enroll in a course, simply click on the registration link provided for each course in this electronic course catalog. Online registration deadline is one (1) week prior to the start date of classes. You must register during the designated timeframe. Please be sure you receive an electronic confirmation. No telephone registrations will be accepted. In the event a class is canceled, registrants will be notified one (1) week prior to the start date.

**** PLEASE SEE PAGES 14 and 15 OF THIS CATALOG FOR ADDITIONAL ENROLLMENT PROCEDURES AND REGISTRATION INFORMATION. ****

NOTE: Please follow your school district's online registration policies and procedures.

NONDISCRIMINATION POLICY

It is the policy of the Lancaster-Lebanon Intermediate Unit 13 not to discriminate on the basis of sex, disability, race, color, and national origin in its educational programs, activities, or employment as required by Title IX, Section 504 and Title IV.

The Lancaster-Lebanon Intermediate Unit 13 will take steps to assure that lack of English language skills will not be a barrier to admission or participation in any educational programs. Further assurance is given that services, activities, and facilities are accessible to and usable by persons with disabilities.

For information regarding civil rights and grievance procedures, contact Philip Steinour, Director of Human Resources, at IU 13, 1020 New Holland Avenue, PA 17601 or telephone (717) 606-1849.

PPID Information

What is a “PPID” and why am I being asked to provide this?

PPID stands for Professional Personnel ID. This is a 7-Digit ID Number for all Pennsylvania-certified educators generated by the Pennsylvania Department of Education.

Beginning in June 2006 all Pennsylvania-certified educators were assigned a new ID number (PPID) by PDE. The primary use of this ID will be to provide an alternative to the Social Security Number for certified educators to use to report and retrieve their Continuing Education credits and hours. This Professional Personnel ID will eventually replace the Social Security Number.

How do I find out what my PPID is?

All Pennsylvania certified educators should go to the PDE website to retrieve their numbers.

www.pde.state.pa.us

On the left-hand side of the homepage, click on the link entitled “Access Services”. In the same column, select “Act 48 - Continuing Professional Education”. You will be taken to the page entitled “Act 48 of 1999 – Continuing Professional Education”. Click on the title of the first yellow box, which will take you to PERMS (Professional Education Records Management System) Welcome webpage. Make selections as needed.

If you have any difficulty or need more information, please contact:

**The Bureau of Teaching and Learning Support:
Division of Professional Development
Pennsylvania Department of Education
333 Market Street – 8th Floor
Harrisburg, Pennsylvania 17126-0333
Voice: (717) 772-4944
Fax: (717) 772-3621**



Teaching and Learning Professional Development

S11-101

Beginning Sign Language

Dates: Wednesdays, June 29, July 6, 13, 20 & 27, 2011

Time: 9:00 AM – 12:00 Noon

Location: The Conference and Training Center at IU 13, Burle Business Park, 1020 New Holland Avenue, Lancaster

Instructor: Adrienne Lerch, IU 13 Interpreter

Professional Opportunity: 15 Act 48 professional education hours ONLY (see NOTE below)

Cost: \$191.00 (\$175.00 for course plus \$16.00 for the textbook)

Description: This workshop will be worth 15 hours toward the Act 48 professional education requirements. Beginning Sign Language is for any professional who has the chance to use sign language. The basic concepts of signing are taught. This workshop will begin with finger spelling and progress with commonly used signs. Daily quizzes, partner signing, and game/practice activities will be used to foster sign application. Sign with voice will be used by the teacher during the classes, with the exception of quizzes and specific practice sessions.

NOTE: This beginner's workshop is being offered for professional education hours only and will not be eligible for CPE credit.

Registration Link: [Enrollment Page for Beginning Sign Language](#)

S11-102

Sign Language: Intermediate I

Dates: Wednesdays, June 29, July 6, 13, 20 & 27, 2011

Time: 1:00 PM – 4:00 PM

Location: The Conference and Training Center at IU 13, Burle Business Park, 1020 New Holland Avenue, Lancaster

Instructor: Adrienne Lerch, IU 13 Interpreter

Professional Opportunity: 1 CPE credit (30 Act 48 professional education hours)

Cost: \$175.00

Prerequisite: *Beginning Sign Language or permission of the instructor*

Description: Sign Language: Intermediate I is for any professional in the field of education who has completed the Beginning Sign Language workshop or has prior consent from the instructor (approximately 200-300 sign vocabulary). It is a continuation of the Beginning Sign Language workshop. The main emphasis will be on building receptive and expressive vocabulary, increasing sign fluency, and developing basic conversation skills through skits, games, homework, daily quizzes, and activities. Each participant will choose and interpret a song of his or her choice with assistance from the instructor. The instructor will also use sign with voice during the majority of the class. Quizzes and selected practice activities will be signed without voice.

Registration Link: [Enrollment Page for Sign Language Intermediate I](#)



S11-103

Differentiated Instruction: Principles and Practice

Dates: Tuesday, August 9 and Thursday, August 11, 2011

Time: 8:00 AM – 4:00 PM

Location: The Conference and Training Center at IU 13, Burle Business Park, 1020 New Holland Avenue, Lancaster

Instructor: Dr. Nancy J. Herr, Middle School Principal, Hempfield SD

Professional Opportunity: 1 CPE credit (30 Act 48 professional education hours)

Cost: \$197.00 (\$175.00 per credit plus \$22.00 for book)

Description: Differentiated Instruction: Principles and Practice is designed to assist teachers in extending their understanding and implementation of the principles and practice of differentiated instruction. This course will focus on the reality of diversity in the regular education classroom and provide a balance of instructional theories and practical applications to help teachers respond to the challenges that accompany this diversity. Participants will be expected to use the theory and strategies they have learned to construct differentiated lesson plans designed to advance the learning and achievement of each student in their classrooms.

Registration Link: [Enrollment Page for Differentiated Instruction: Principles and Practice](#)



S11-104

Differentiated Instruction: Instructional Strategies and Assessment

Dates: Tuesday, August 16 and Thursday, August 18, 2011

Time: 8:00 AM – 4:00 PM

Location: The Conference and Training Center at IU 13, Burle Business Park, 1020 New Holland Avenue, Lancaster

Instructor: Dr. Nancy J. Herr, Middle School Principal, Hempfield SD

Professional Opportunity: 1 CPE credit (30 Act 48 professional education hours)

Cost: \$200.00 (\$175.00 per credit plus \$25.00 for book)

Description: Differentiated Instruction: Instructional Strategies and Assessment is designed to assist teachers to further their understanding and implementation of the principles and practice of differentiated instruction. This course will concentrate on effectively managing a DI classroom. Focus will be on adjusting, compacting, and grouping procedures. Participants will be expected to have taken *Differentiated Instruction: Principles and Practice* or have some practical experience with the theory and strategies of differentiation.

Registration Link: [Enrollment Page for Differentiated Instruction: Instructional Strategies and Assessment](#)

Teaching and Learning Professional Development

WEB 2.0 TOOLS FOR TEACHING AND LEARNING S11- 105 Kindergarten-Grade 6 / S11-106 Grades 7-12

NEW!

Description: Teachers must learn and teach information literacy that includes effectively using the Internet. These Web 2.0 applications can help students develop the skills they need to succeed in the 21st century world. Participants will be exposed to many of the tools of the read/write web and will get the chance to experiment with new tools. Some Web 2.0 tools that will be covered include: Google Apps for Educators, Jing, Voicethread, Tikatok, Glogster, Wordle, Kidblog, Make Belief Comics, and Wikispaces. Acquisition of these skills will enable participants to create and deliver collaborative and interactive content-specific learning activities. Participants will work with numerous web 2.0 tools and be provided with ample time for mastery and application. Discussions will focus on how educators can integrate these tools into their classroom to enhance student learning, as well as how to help students use these new tools safely.



Please bring your own laptop. Firefox will be used to demonstrate each tool. Please have Firefox and Jing downloaded prior to class.



(Free Firefox download: <http://www.mozilla.com/en-US/firefox/>)

(Free Jing download: <http://www.techsmith.com/jing/free/>)

S11-105

Web 2.0 Tools for Teaching and Learning (Kindergarten-Grade 6) *

Dates: Wednesdays, July 6 & 13, 2011

Time: 8:00 AM - 4:00 PM

Location: The Conference and Training Center at IU 13, Burle Business Park, 1020 New Holland Avenue, Lancaster

Instructor: Ashley Rednak, Instructional Technology Coordinator, Pequea Valley School District

Professional Opportunity: 1 CPE credit (30 Act 48 professional education hours)

Cost: \$175.00

Registration Link: [Enrollment Page for Web 2.0 \(Kindergarten-Grade 6\)](#)

S11-106

Web 2.0 Tools for Teaching and Learning (Grades 7-12) *

Dates: Wednesdays, July 20 & 27, 2011

Time: 8:00 AM – 4:00 PM

Location: The Conference and Training Center at IU 13, Burle Business Park, 1020 New Holland Avenue, Lancaster

Instructor: Ashley Rednak, Instructional Technology Coordinator, Pequea Valley School District

Professional Opportunity: 1 CPE credit (30 Act 48 professional education hours)

Cost: \$175.00

Registration Link: [Enrollment Page for Web 2.0 \(Grades 7-12\)](#)

*** Pending approval from Pennsylvania Department of Education (PDE)**

S11-107

**Strengthening Your Standards Aligned K-12 Science Education System *
(Part 1: Curriculum & Assessment)**

NEW!

Dates: Wednesday, July 20; Friday, July 22; Wednesday, July 27; Friday, July 29, 2011

Time: 9:00 AM – 1:00 PM

Location: The Conference and Training Center at IU 13, Burle Business Park, 1020 New Holland Avenue, Lancaster

Instructor: Drue Feilmeier, Curriculum & Instruction Specialist, IU 13

Professional Opportunity: 1 CPE credit (30 Act 48 professional education hours)

Cost: \$175.00

Description: Participants in Part 1 of this three-part course will explore resources and protocols for strengthening the curriculum and assessment components of their vertical and horizontal standards aligned science education system at the district, school, and classroom levels. **Participants should bring curriculum materials for their grade level science curriculum or science course as well as a laptop** for assessing and using the Pennsylvania Department of Education's Standards Aligned System Portal (www.pdesas.org).

Registration Link: [Enrollment Page for Strengthening Your Standards Aligned K-12 Science Education System](#)

Stay tuned for:

Part 2 - Instructional and Materials & Resources (1 CPE credit)

Part 3 - Interventions and Process Replication (1 CPE credit)

** Pending approval from Pennsylvania Department of Education (PDE)*

S11-108

Electric Kiln Ceramics – Surface and Color Development

NEW!

Dates: Monday-Friday, June 20, 21, 22, 23, & 24 **and** Tuesday, July 5, Wednesday, July 6, & Friday July 8, 2011

Instruction Time: 9:00 AM – 12:00 Noon (except July 8)

Lab Time: 1:00 PM – 3:30 PM

Location: Dennis Maust Ceramics Studio, 126 Fairland Road, Lititz

Instructor: Dennis Maust, MFA

Professional Opportunity: 2 CPE credits (60 Act 48 professional education hours)

Cost: \$410.00 (\$175.00 per credit plus \$60.00 for materials)

Description: This one-and-one-half week workshop is designed to give art teachers a better technical understanding of clay and glazes and ability to achieve more interesting surfaces and colors in ceramics projects. This class reviews forming techniques but focuses on surface treatment and color options through use of oxides in slip and glazes. Demonstrations of slip application, sgraffito, burnishing and a variety of glaze applications will be given. Also demonstration of glaze mixing will give teachers the ability to mix and test their own glazes so as not to rely on expensive commercial products. Teachers will together choose a group of projects they have experience introducing to students. After producing some of these projects in clay, we will then discuss a number of surface treatments that could enhance them subsequently trying the variety discussed on different projects.

Registration Link: [Enrollment Page for Electric Kiln Ceramics](#)



S11-109

Using Microsoft Word in the Classroom

Office 2010 version!

Dates: Monday-Friday, August 1, 2, 3, 4, and 5, 2011

Time: 9:00 AM – 12:00 Noon

Location: The Conference and Training Center at IU 13, Burle Business Park, 1020 New Holland Avenue, Lancaster

Instructor: Rick Walter, Earth Science Teacher (retired), Manheim Central School District

Professional Opportunity: 1 CPE credit (30 Act 48 professional education hours)

Cost: \$175.00

Description: This course will utilize Microsoft Word (Office 2010 version) to develop teacher management documents, classroom materials, and integration activities in the K-12 classroom. Instructional time is 15 credit hours with 15 hours of activity to be completed outside of the classroom.

Registration Link: [Enrollment Page for Using Microsoft Word in the Classroom](#)

S11-110

Creating Effective Electronic Presentations Using PowerPoint

Office 2010 version!

Dates: Monday-Friday, August 8, 9, 10, 11, and 12, 2011

Time: 9:00 AM – 1:00 PM

Location: The Conference and Training Center at IU 13, Burle Business Park, 1020 New Holland Avenue, Lancaster

Instructor: Rick Walter, Earth Science Teacher (retired), Manheim Central School District

Professional Opportunity: 1 CPE credit (30 Act 48 professional education hours)

Cost: \$175.00

Description: This course will demonstrate and provide hands-on experience related to the use of Microsoft's PowerPoint presentation software (Office 2010 version) and how this resource can be used in the classroom. Emphasis will be placed on classroom/administrative applications of this powerful presentation program. Participants will be exposed to educational uses of the program such as digital storytelling, today in History, visual poetry, tutorials, Jeopardy reviews, quizzes for individual students, displaying student work, and other project-based learning using multimedia. Strategies for developing effective presentations for use in a variety of educational settings (Promethean board) will be discussed and materials will be developed. Participants in this course must have a working knowledge of the basics of using a computer. No time will be spent on computer basics in this course. Although Windows based computers will be used, all concepts and presentations taught and created in this course could be applied and transferred to the Macintosh platform.

Registration Link: [Enrollment Page for Creating Effective Electronic Presentations Using PowerPoint](#)

S11-111

Team Building: Creating a Positive Classroom Environment

Dates: Monday-Friday, July 25, 26, 27, 28, and 29, 2011

Time: 8:00 AM - 5:30 PM

Location: The Conference and Training Center at IU 13, Burle Business Park, 1020 New Holland Avenue, Lancaster

Instructor: Christine Motley, OPN.WYD

Professional Opportunity: 3 CPE credits (90 Act 48 professional education hours)

Cost: \$525.00 (\$175.00 per CPE credit)

Description: Trust, communication, safety for all, group problem solving and diversity awareness are the key components of this course. Designed for K-12 educators and business professionals, this course will provide a complete understanding of the methods, philosophies and techniques necessary to infuse teambuilding initiatives into any curriculum to create a healthy, positive environment for learning and working. Participants will thoroughly explore a unique blend of Positive and Responsive Classroom Management Models; Experiential Education and proven group processing practices. Emphasis will be on creating a practical working curriculum, which includes communication skill building, diversity awareness, collaborative learning practices and group problem-solving initiatives and activities. A presentation blueprint, which will conform and meet standards of any school district/system mission statement or business plan, is included. All activities are arranged for use in the classroom or within the working environment.

Participants will:

- **Define** the sequential progression of interpersonal and collaborative skills developed through various teambuilding activities which are necessary to create a PCE (Positive Classroom Environment)
- **Comprehend** the “Experiential Learning Cycle” as a learning theory
- **Develop** an understanding of teambuilding initiatives via experiential activities
- **Design** professional strategies for creating a PCE by utilizing skills attained from competency #3 and learning about relevant personality and learning style assessments (e.g. Meyers Briggs Type Indicator).
- **Develop** an action plan for use in each participant’s area of discipline.

Registration Link: [Enrollment Page for Team Building: Creating a Positive Classroom Environment](#)

S11-112

Diversity Awareness in Education: A New Perspective for a Changing Classroom

Dates: Monday-Friday, August 8, 9, 10, 11, and 12, 2011

Time: 8:00 AM - 5:30 PM

Location: The Conference and Training Center at IU 13, Burle Business Park, 1020 New Holland Avenue, Lancaster

Instructor: Stephanie Roy & Mark Good, OPN.WYD

Professional Opportunity: 3 CPE credits (90 Act 48 professional education hours)

Cost: \$525.00 (\$175.00 per CPE credit)

Description: This course is designed to help educators gain a greater awareness of the many facets of diversity within their school community and beyond. These include race, culture, sexual orientation and more. Through introspective and insightful learning, emphasis is placed on defining a personal worldview and appreciating the worldview of others around diversity. In the end, participants will be equipped to infuse effective strategies for use in any curriculum relevant to your position.

Participants will:

- **Complete a written self-assessment** to determine your own current level of awareness of diversity in order to assess personal goals for the course and to initiate your personal understanding of a number of diverse students needs within your specific area of discipline.
- **Establish a rationale** to validate the importance and necessity for each individual to attain diversity awareness and to learn how to answer those tough questions from decision makers in your school community who may not be in favor of diversity initiatives.
- **Examine their self-awareness** of diversity as it has evolved throughout your life to better understand the origin of your own negative assumptions, stereotypes and prejudices.
- **Comprehend their personal worldview** as it pertains to diversity and to begin to develop a lifelong examination of the worldview of others in order to become more empowered to appreciate differing perspectives that can lead to improved classroom instruction.
- **Leave with a complete understanding of** how to differentiate between “Active Racism” and “Institutional Racism”; how Racial Identity in America & Homophobia deeply affects all of us throughout our lives and why K-12 educators should learn to safely infuse these topics into their current curriculum.
- **Develop a personal plan of action** that can initiate genuine and relevant diversity awareness that will allow you to expand upon classroom instruction/learning methods you can really use.

Registration Link: [Enrollment Page for Diversity Awareness in Education](#)

S11-113

Helping Youth Bounce Back: Supporting Students, Supporting Educators *

NEW!

Dates: Monday-Friday, August 15, 16, 17, 18, and 19, 2011

Time: 8:00 AM - 5:30 PM

Location: The Conference and Training Center at IU 13, Burle Business Park, 1020 New Holland Avenue, Lancaster

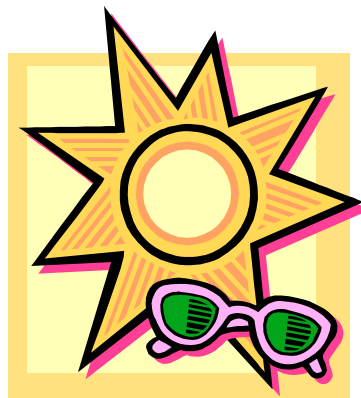
Instructor: Stephanie Roy & Mark Good, OPN.WYD

Professional Opportunity: 3 CPE credits (90 Act 48 professional education hours)

Cost: \$525.00 (\$175.00 per CPE credit)

Description: Youth ages 5-18, are bombarded with negative media images, targets and perpetrators of bullying, influenced by negative stereotypes and assumptions, and plagued with risks posed by their environment including substance and mental health issues, violence, and poverty. This course will educate participants on topics of diversity and cultural competency, focusing on topics most relevant to youth and adolescents. Participants will learn strategies for promoting resiliency (the ability to bounce back) in youth with an emphasis on fostering positive values, social competence, and encouraging parental involvement. Upon completion of this course, participants will be prepared with strategies to foster resiliency among the youth they educate across curriculum.

Registration Link: [Enrollment Page for Helping Youth Bounce Back](#)



** Pending approval from Pennsylvania Department of Education (PDE)*

How to Register for IU 13 CPE Courses:

(Please follow your school district's online registration policies and procedures.)

1. Go to www.iu13.org. Click on large blue "Event/Conferences" rectangle on the right side of the webpage.
2. Click on blue "Event/Conference Information and On-Line Registration" words on IU 13 Conferences & Events page. This will take you to IU 13's My Learning Plan window.
3. In left column, click [uncheck all] command at bottom of column. Then check off first box ("Cont. Professional Ed").
4. The available CPE courses for the current month will appear. Click on desired month.
5. Click on **first** listing of desired course(s). Click on orange enroll box to enroll.
6. Select appropriate log in method:

I'm a registered user: Select this option if you have already created a Web Registration account.

I'm a new user: Select this option if you do not have a Web Registration account yet. The account is free, and you can use it to check the status of your registrations and maintain your records.

MyLearningPlan.com users: Select this option if you have an account with MyLearningPlan.com. New users will need to create an account. Please follow the step-by-step directions provided. (To find out if your district is using MyLearningPlan, refer to chart on page 15.)

7. Complete the registration form and click on "Update and Continue".
8. Choose your credit option.
9. Choose your payment method (Check mailed in advance is preferred*) or District Pays (PO). Click "Next". **PLEASE NOTE THAT YOUR SCHOOL DISTRICT WILL BE INVOICED FOR PAYMENT OF YOUR CPE COURSE IF YOU DO NOT MAIL YOUR PAYMENT IN ADVANCE.**
10. Agree to the terms and conditions.
11. Print out confirmation and include with your payment.

*** Please make checks payable to Lancaster-Lebanon IU 13 and mail to:
Beth Parkins, Lancaster-Lebanon IU 13, 1020 New Holland Avenue, Lancaster, PA 17601**

**** Checks must be received one (1) week prior to the start of selected course(s).****

**Please notify us if you have special needs and/or need assistance as addressed by the
Americans with Disabilities Act.**

If you are employed by a public school district in the IU 13 region and are unsure about your school district's online registration policies and procedures, please see contact information below to clarify. If you are employed by another school or organization and need assistance, please call Beth Parkins at (717) 606-1822.

My Learning Plan Districts

District	Contact	Phone Number
Cocalico	Sandy Reeder	336-1403
Columbia Borough	Dr. Diane Fry	684-2283
Conestoga Valley	Katherine Gomez	397-5231 ext. 2407
Donegal	Tammi Alexander	492-1308
Eastern Lancaster	Carol Wanner	354-1547
Eastern Lebanon	Tina Kunder	866-7117 ext. 2313
Elizabethtown Area	Doris Lockerd	367-1521 ext. 1004
Ephrata Area	Pam Rothweiler	733-1513
Hempfield	Robin Anderson	898-5796/618-7026
Lampeter-Strasburg	Darin Wagner	464-3311 ext. 1080
School District of Lancaster	Dave Calendar Kathy Tobias	291-6196 291-6206
Manheim Central	Alison Sherk	664-8558
Palmyra Area	Becky Bomgardner	838-3144
Warwick	Diane Skilling	626-3734 ext. 3717

Non-My Learning Plan Districts (WebReg)

District	Contact	Phone Number
Annville-Cleona	Sue Struphar	867-7600
Cornwall-Lebanon	Bonnie Schott	272-2031 ext. 1708
Lebanon	Deb Miller	270-6894
Manheim Township	Sherry Criniti	569-8231 ext. 3041
Northern Lebanon	Mary Gerhart	865-0541 ext. 2502
Penn Manor	Ellen Pollock	872-9500
Pequea Valley	Dawn Twardowski	768-5590
Solanco	Dr. Brian Bliss	786-8401
Lancaster CCTC	Peggy Dell Deb Sausman	859-5108 859-5100 ext. 5112
Lebanon CCTC	George Custer	273-8551